





A photograph showing a slum area with a large, messy pile of trash and debris in the foreground. In the background, there are several buildings with corrugated metal roofs. The scene is cluttered and appears to be an informal settlement.

# Environmental crimes' intelligence and investigation protocol based on multiple data sources

EMERITUS aims to create a single-entry point platform for law enforcement authorities and border guards to improve investigative capabilities against environmental waste crimes.

# CHALLENGE

Environmental crimes, such as the discharge of substances into the air, water and soil, as well as the shipping and trafficking of waste and hazardous materials, have enormous impacts on the climate, human health and the environment. However, these crimes are still considered highly profitable for criminals since most feature relatively low risks of detection and penalties for the perpetrators.

 <b>20</b> PARTNERS (+3 affiliated entities)	 <b>9</b> COUNTRIES	 <b>5.9</b> M€ BUDGET (78% EC grant)	 <b>3</b> YEARS
--	--	--	---

EMERITUS aims to lay the foundations of a new generation of technological tools orchestrated via a single-entry point platform at the service of Law Enforcement Authorities (LEA) and Border Guards (BG) to improve detection and proof collection capabilities against waste-related environmental crimes.

To do so, EMERITUS will create and implement a protocol for effective environmental crime investigation, mainly combining innovative monitoring and analysis technologies with a complementary training programme to foster LEAs and BGs' intelligence and investigation capabilities at both the national and cross-border levels.

The ambition of EMERITUS is to explore and demonstrate how these technologies and specialised training could improve the efficiency of environmental crime detection and intelligent risk profiling to optimise resources, reduce the risk for operators and provide a deterrent for offenders.

# PROJECT

# AIM

## MAIN RESULTS

 EMERITUS PLATFORM FOR INTEGRATED INTELLIGENCE	 Protocol for waste-crimes investigation	 Training programme for environmental crimes investigation
 UCs-bases simulation exercises	 EMERITUS community of practice	 Evidence-based recommendations

## IMPACT



EMERITUS intends to generate technological and societal impacts with both a medium and long-term perspective. Indeed, on the one side EMERITUS will foster the uptake of state-of-the-art technologies for the investigation of environmental crimes (Platform). On the other side, it will improve the expertise of LEAs/BGs in this domain (training programme) and facilitate the lawful court-proof collection of crime evidence (Protocol) and the cross-border and multidisciplinary collaboration (CoP). As such, EMERITUS will ultimately contribute to enhancing the prevention, detection and deterrence of environmental crimes as well as evidence-based policymaking in this domain at national, cross-border and international levels.

# USE CASES

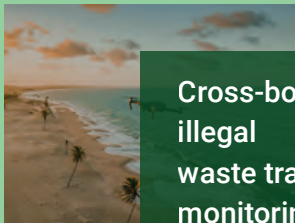
Four relevant use cases have been identified to ensure that the project results can translate into technologies and operative support fitting in real-world scenarios and needs, as well as to test the EMERITUS results with actual data and operators.



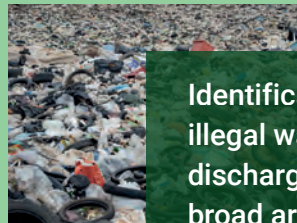
Water  
contaminant  
source detection



Waste storage  
centres  
monitoring



Cross-border  
illegal  
waste trafficking  
monitoring



Identification of  
illegal waste  
discharge sites in  
broad areas



[www.emeritusproject.eu](http://www.emeritusproject.eu)



@emeritus\_EU



@emeritus\_EU



This project has received funding from the European Union's Horizon Europe research and innovation programme under grant agreement No 101073874.

